

Exclusive

Canvalum 700
Canopy

US PAT NOS 6,848,222; D504,956 S; D513,804 S; 7,065,934 B2

"The best looking awning in the neighborhood!"SM

Deck • Patio • Walkway • Commercial

Covers & Canopies

700 ULTRA Series Suburb-A-Port



*Year round protection
from the elements*



Crest
Aluminum

www.crestaluminum.com



- Canopies
- Car Ports
- Walkway Covers
- Dock Covers

Rolled or Extruded Aluminum Perimeters..
Great new colors to complement your project..
Engineered to your specifications.





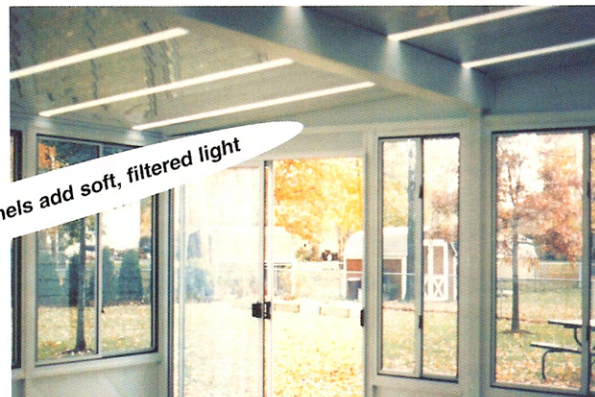
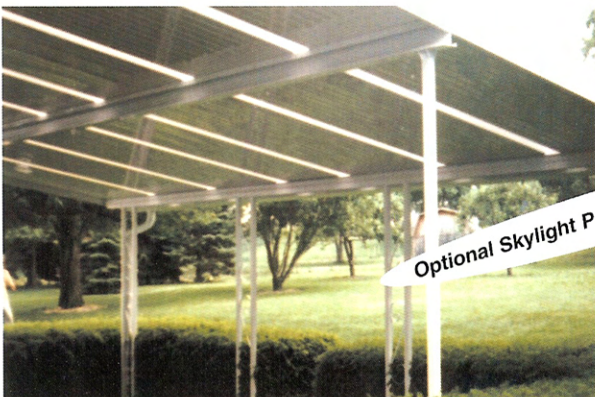
Patio and Deck Covers in 2 Distinctive Styles to suit your lifestyle.

Introducing the all new *Canvalum*® Canopy **“the best looking awning in the neighborhood”**
Combining the beauty of fabric with the durability of aluminum.

US Patent Nos 6,848,222 ; D504,956 S; 7,065,934 B2; D513,804 S



New!!
Patented Canvalum®
Deck Covers



Optional Skylight Panels add soft, filtered light



Ultra 700 Series...

Extruded Perimeter System with the only 5"x5" Gutter System on the market.

by: **Crest Aluminum**



FROM START...



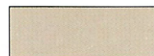
TO FINISH...
ULTRA 700 COVERS OFFER
IMPECCABLE QUALITY

Color Selector

Colors may vary, see actual samples before ordering.
Additional colors may be available, consult factory.



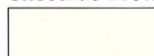
Chestnut Brown



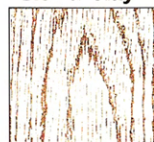
Sierra Clay



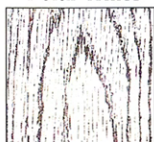
Polar White



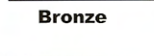
Colonial White



Clay Oak *



White Oak *



Bronze

* Available in roof panels only, White on reverse side.

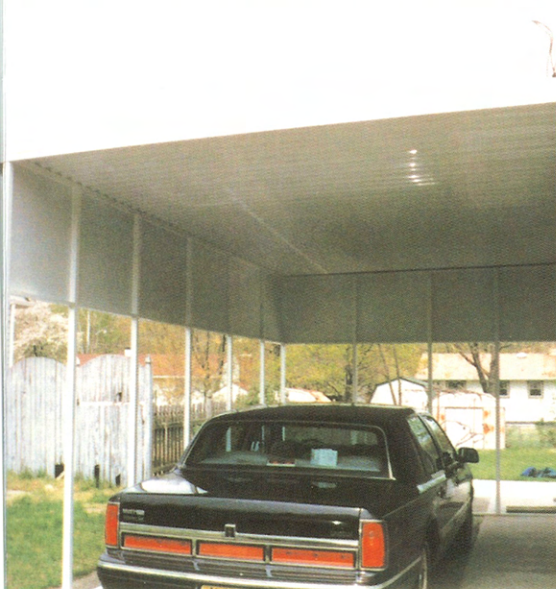
Ultra 700 Series Specifications

- Perimeter:** 6063 T6 Alloy Extruded Aluminum
- Gutter System:** 6063 T6 Extruded Aluminum 3"x5" with .062 wall thickness or **Exclusive** 5"x5" with 1/8" wall thickness
- Wall System:** 6063 T6 Extruded Aluminum Hinged "J Rail" 2 Piece wall mount. With neoprene gasket built in.
- Fasteners:** All stainless steel fasteners for panel installation. Color matched fasteners for perimeter.
- Roof Panels:** Structural Aluminum Flat or "W" Pans in .024, .032, or .040 thickness
- Available Colors:**
 - Perimeter:** White - Clay- Brown - Bronze
 - Roof Panels:** White - Colonial White - Sierra Clay - Brown - Bronze and new Woodgrains Available in 9 complementary colors
- Stripes:** Available in 9 complementary colors

Suburb-A-Port...

Roll Formed Perimeter and Legendary Quality...
all at a price to fit your budget.

by: **Crest**
Aluminum



Suburb-A-Port Series Specifications

- Perimeter:** 3105 H-14 Alloy Rollformed Aluminum.
- Gutter System:** 3"x5" .050 wall thickness.
- Wall System:** Extruded Aluminum "G Rail" 2 piece hinged wall mount with built-in neoprene gasket.
- Fasteners:** All stainless steel fasteners for panel installation. Color matched fasteners for perimeter.
- Roof Panels:** Structural Flat or "W" Pans in 4 thicknesses, .024-.032-.040
- Available Colors:**
Perimeter: White - Colonial White
Roof Pans: White - Col White - Clay - Woodgrain
Stripes: Not Available

Covers For Decks, Patios, Walkways, Commercial Canopies

Engineered for Performance....

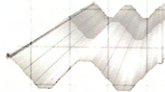
Designed for the Ultimate in Strength...

and Built to Exacting Standards..

8" Flat Panels with Skylite

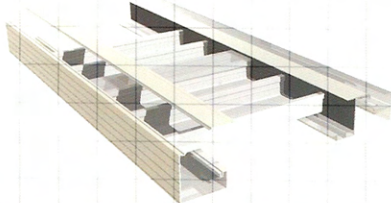


12" Twin Vee "W" Panel



- SYSTEMS CAN BE ENGINEERED FOR LIVE LOADS UP TO 50 LBS.
- PERIMETERS AVAILABLE IN EXTRUDED OR ROLL FORMED ALUMINUM.
- ROOF PANELS IN FLAT OR "W" PAN CONFIGURATIONS
- ROOF PANELS AVAILABLE IN THICKNESSES OF .024" - .032" .040".

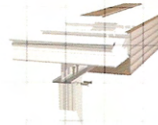
Engineered Post & Beam Systems



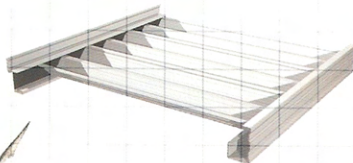
ULTRA 700 Series J Rail System



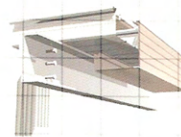
POST TO SWIVEL BEAM



3" ALUM POST TO I-BEAM



Suburb-A-Port G Rail System



3" STEEL POST TO C-BEAM



All Engineering Data Compiled by:
PARSONS ENGINEERING SCIENCE, INC.

19101 Villa View Road, Suite 301 • Cleveland, Ohio 44119

Gordon Joseph Melle - P. E.

Michael Ming-Tao Li - P. E.

H. Jay Fralic - P. E.



**Crest
Aluminum**

AUTHORIZED DEALER

8287 Tyler Blvd • Mentor, OH 44060
www.crestaluminum.com

Crest Covers are distributed only through professionals in the remodeling and building trades.