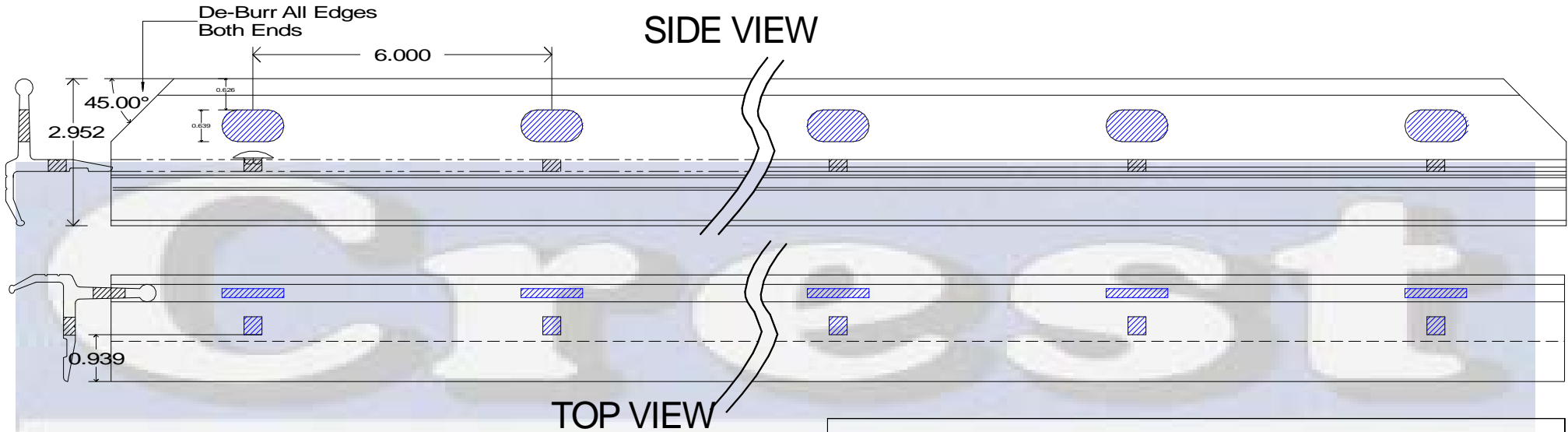


CREST #2820
 HUNTER MARINE® "LEGEND SERIES"
 ALUMINUM TOE RAIL

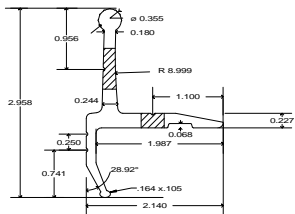


Crest Aluminum Products Inc
 Part No. 2820-xx
 Die No. CTP-XX
 Hunter Legend Toe Rail

MARINE PRODUCTS
 www.crestaluminum.com

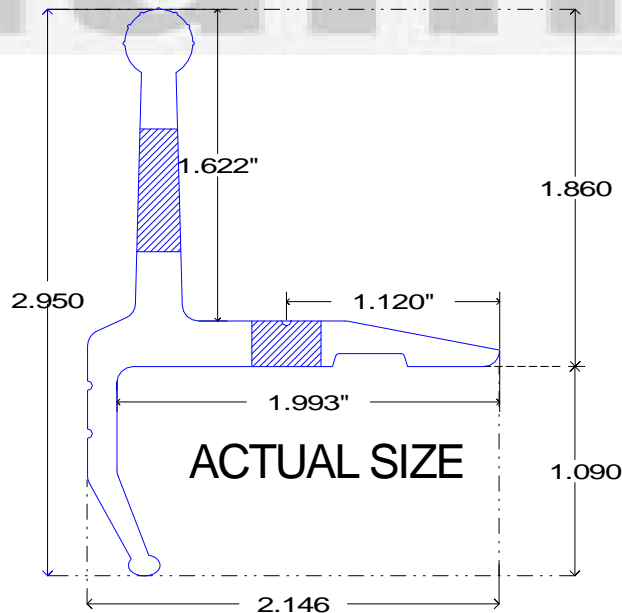


Profile View



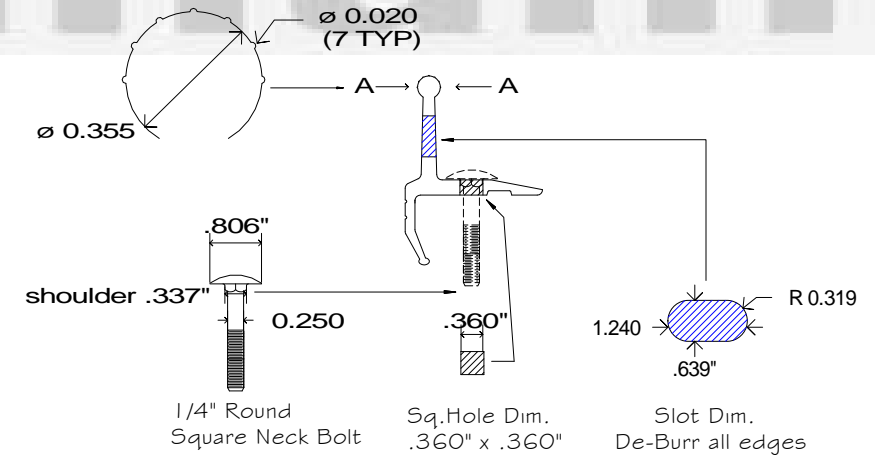
Notes:

Alloy: 6061 T-6
Finish: Clear Anodize
Lengths: 31' - 0"
Slots: 6" On Center
Holes: 6" On Center
Wt./ Ft.: 1.108 lb/ft



General Notes:
 Slots and Fastener Holes 6" On Center
 De-Burr all edges.

DETAIL "A-A"



PART NO	2820CL-31		Crest Aluminum Products Inc 8287 Tyler Blvd Mentor OH 44060 USA	REVISIONS	DATE
ALLOY	6061 T-6			final dwg	01-14-09
FINISH	60 MIN CLR VELO	JOB NO.	DATE: 05-14-08		
LENGTHS	31'-0"	CUSTOMER / PROJECT "HUNTER MARINE" Hunter LEGEND Style Toe Rail			
UNSPEC RADIUS		© Crest Aluminum Products Inc 2008 J.M. Allin			
DRAWING BY:	J. M. ALLIN				