

CREST C-282 I  
HUNTER 37 TOE RAIL

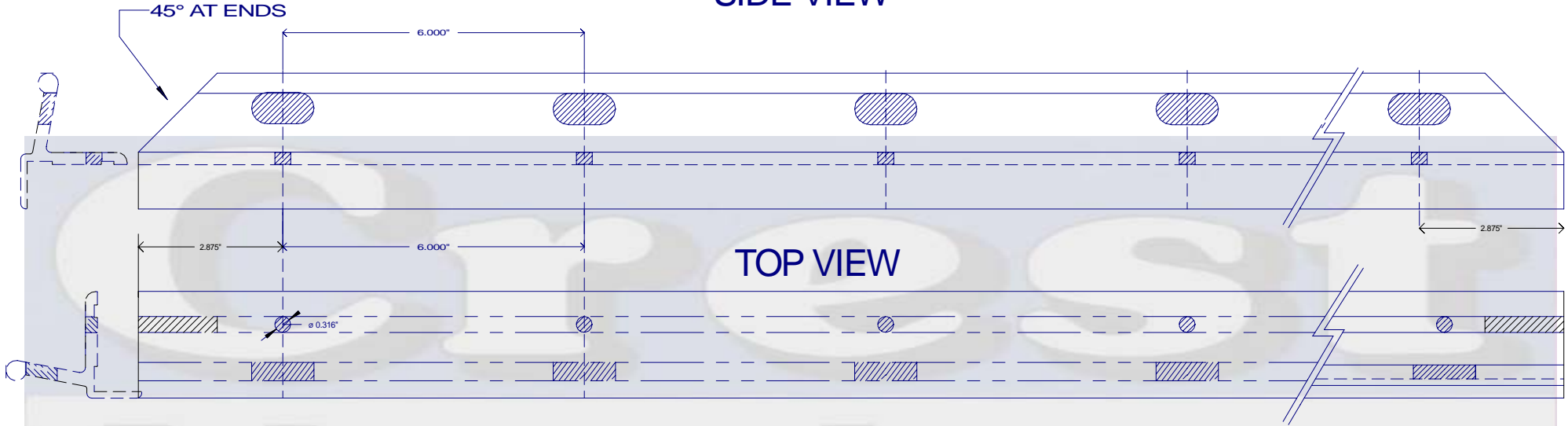


MARINE PRODUCTS  
www.crestaluminum.com

Crest Aluminum Products Inc

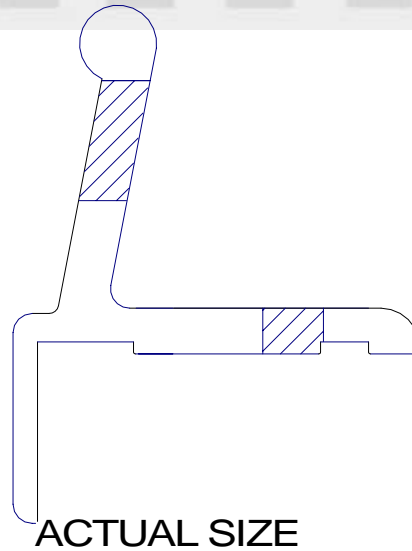
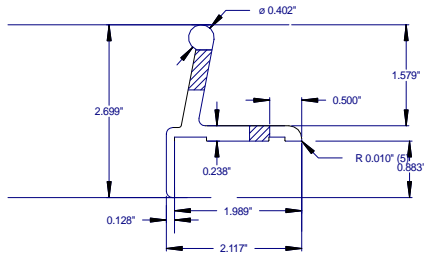
Part No. C-282 I  
HUNTER 37  
Slotted Toe Rail

SIDE VIEW

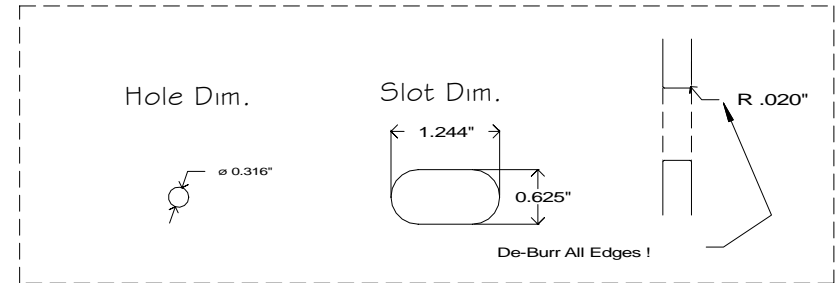


TOP VIEW

PROFILE VIEW



ACTUAL SIZE



Notes:

- Alloy: 6061 T-6
- Finish: Hard Coat Anod.
- Lengths: 34'-6.25"
- Slots: 6.00" On Center
- Mnt Holes: 6.00" On Center
- Wt./ Ft.: 1.261 bs./ft

PART NO	C-282 I		Crest Aluminum Products Inc 8287 Tyler Blvd Mentor OH 44060 USA	REVISIONS	DATE
ALLOY	6061 T-6			END HOLE LOC	02-02-10
FINISH	hardcoat	JOB NO.	DATE: 02-02-10		
LENGTHS	34'-6.25"	CUSTOMER / PROJECT			
UNSPEC RADIUS	.016"	CTP 282 I			
DRAWING BY:	J. M. ALLIN	© Crest Aluminum Products Inc 2006 J.M. Allin			