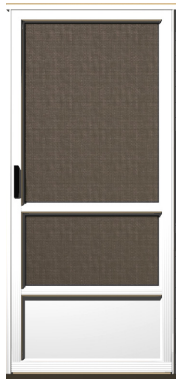


SIX CLASSIC COLORS



Polar White - WH



Sierra Clay - CL



Chestnut Brown - BR



Quaker Bronze - BZ



Wicker Beige - WK



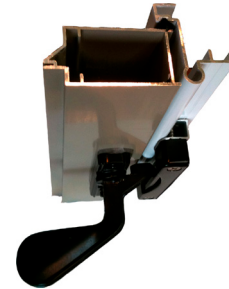
Black - BL

NOTE: Colors shown here are approximate. Refer to color samples for an exact match.

QUALITY HARDWARE OPTIONS



STANDARD BLACK
PUSH BUTTON HANDLE



INSWING HARDWARE KIT



MEDIUM DUTY HYDRAULIC
CLOSER



HEAVY DUTY PNEUMATIC
CLOSER

ComfortTite Doors are sold and serviced
by qualified remodeling companies only.
Not available in Big Box stores

Sold and Serviced By:

Standard Door Sizes	Minimum - Maximum Doorway Width	Minimum - Maximum Doorway Height
30" x 80"	29 7/8" to 30 3/8"	80" to 81"
32" x 80"	31 7/8" to 32 3/8"	80" to 81"
36" x 80"	35 7/8" to 36 3/8"	80" to 81"

Custom sizes available - Please allow 2 weeks.



8287 Tyler Boulevard Mentor, OH 44060 800-255-1588
 ©2023 Crest Aluminum Products Co, Inc All Rights Reserved



**QUALITY STORM DOORS
 WITH TRADITIONAL STYLING,
 ROCK SOLID DURABILITY,
 AND NO BIG BOXES**

Crest Aluminum *Made in Ohio*
COMFORT TITE
 Deluxe Storm Door *Series 800*

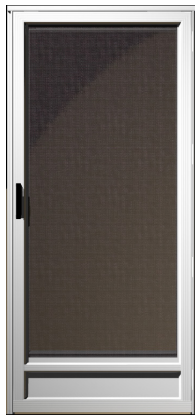
Traditional designs based on the look of a wood screen door with superior performance, longevity, and the low maintenance of powder coated aluminum.

FOUR TRADITIONAL STYLES

A variety of styles, colors, and hardware options enable you to add detail to your ComfortTite door and lasting value to your home. All ComfortTite doors come standard with both screen and glass inserts. Doors are available with screen only.



8500 HI-LITE



8501 ONE LITE



8502 EQUI-LITE

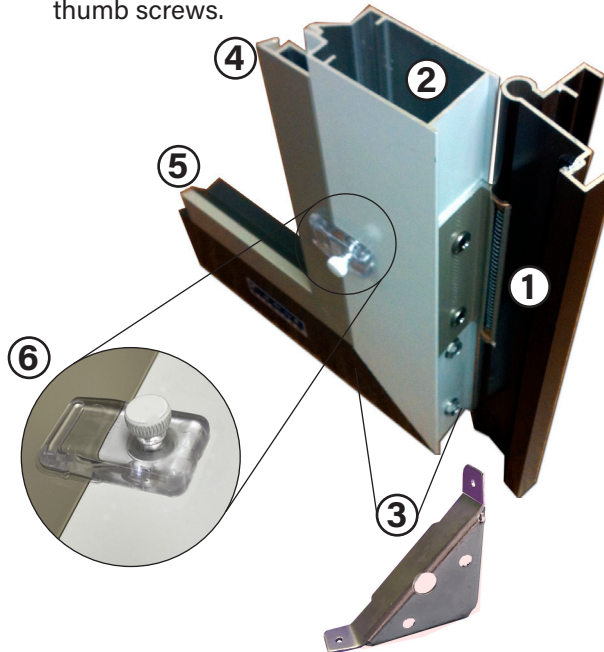


8503 DELUXE HI-LITE

CONSIDER THE QUALITY FIRST

ComfortTite screen & storm doors have the thickest, strongest aluminum stiles and frames in the industry. Thicker aluminum means longer lasting performance.

- ① **Each door is Hand-Built...** Four hinges with oil impregnated bronze bearings and stainless steel hinge pins assure smooth and quiet operation and prevent sagging.
- ② **Full 1¼" thick** frame is designed to provide years of reliable service.
- ③ **Four 14 gauge steel** corner gussets prevent racking of door.
- ④ **Standard Extruded Aluminum** screen and sash frames with aluminum or fiberglass screen wire.
- ⑤ **Heavy .050" thick 6063 T6 Extruded Aluminum** door stile has an attractive fluted profile and a durable powder coat finish.
- ⑥ **Exclusive unbreakable clear polycarbonate** sash retainer clips and color matched aluminum thumb screws.



HOW TO MEASURE FOR STORM DOORS

Take all measurements from the door frame on the outside as shown in the diagram.

For the width: take measurements at the top (A), center (B), and bottom (C).

For the height: take measurements on both sides (D).

Use the shortest measurements to determine the needed width and height.

Measurements

- A: _____
- B: _____
- C: _____
- D: _____

