

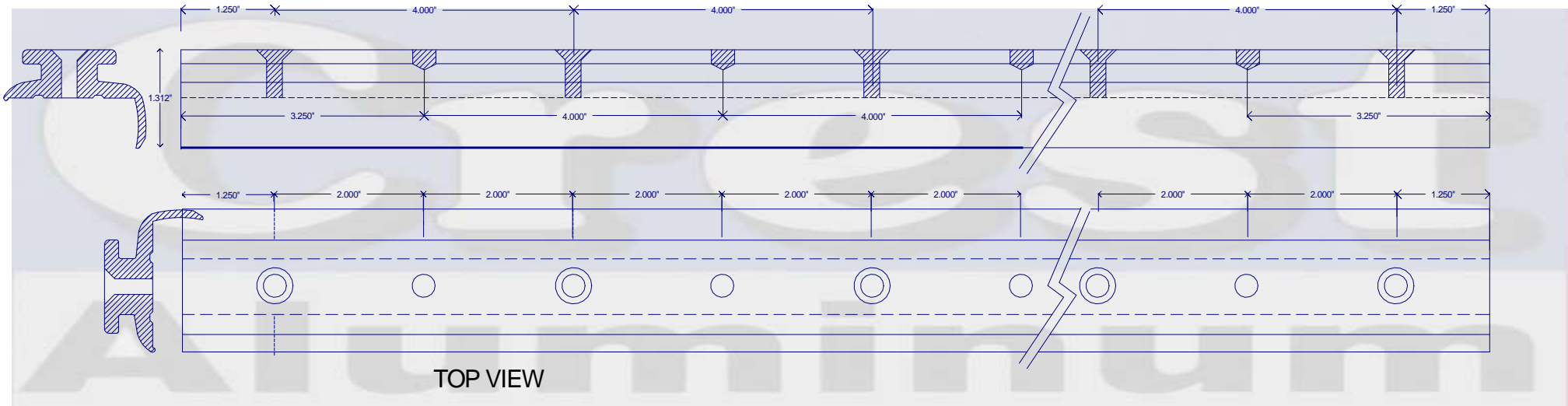
CREST 2817 1 1/4" "T" Rail  
 DIRECT MATCH WITH  
 2807 SLOTTED TOE RAIL



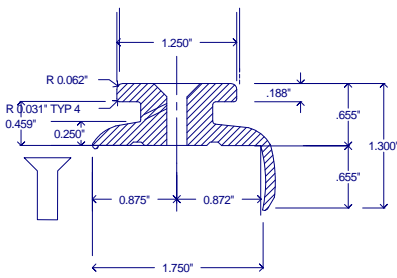
Crest Aluminum Products Inc  
 Part No. C-2817  
 Crest "T" Rail

MARINE PRODUCTS  
 www.crestaluminum.com

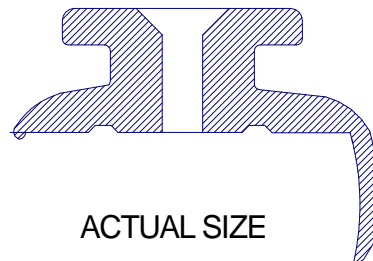
SIDE VIEW



TOP VIEW

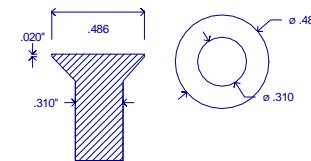


SECTION VIEW

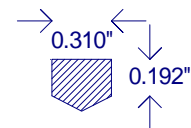


ACTUAL SIZE

Fastener Hole Dim.



Stop Hole Dim.



Notes:

- Alloy:** 6061 T-6
- Finish:** Hard Coat Anod.  
30 Min Clr. Velo
- Lengths:** 19'-10"
- Slots:** na
- Wt./ Ft.:** .975 lbs.

PART NO	C-2817		Crest Aluminum Products Inc 8287 Tyler Blvd Mentor OH 44060 USA	REVISIONS	DATE
ALLOY	6061 T-6				
FINISH	BLK HDCT ANOD 30 MIN CLR VELO	JOB NO.	DATE: 11/21/06		
LENGTHS	19'-10"	CUSTOMER / PROJECT			
UNSPEC RADIUS	.016"	2817 1 1/4 "T" Rail			
DRAWING BY:	J. M. ALLIN	©Crest Aluminum Products Inc 2006 J.M. Allin			