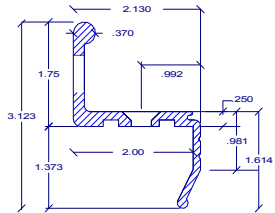
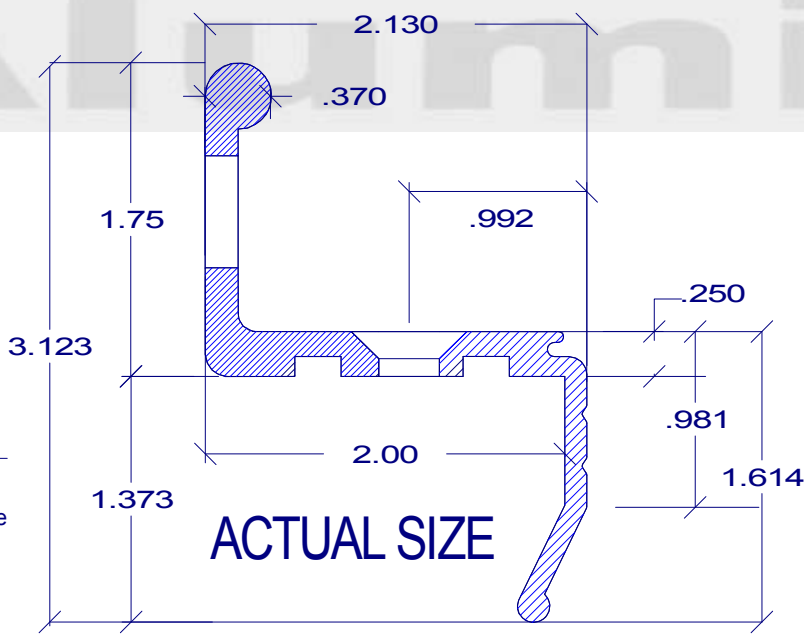
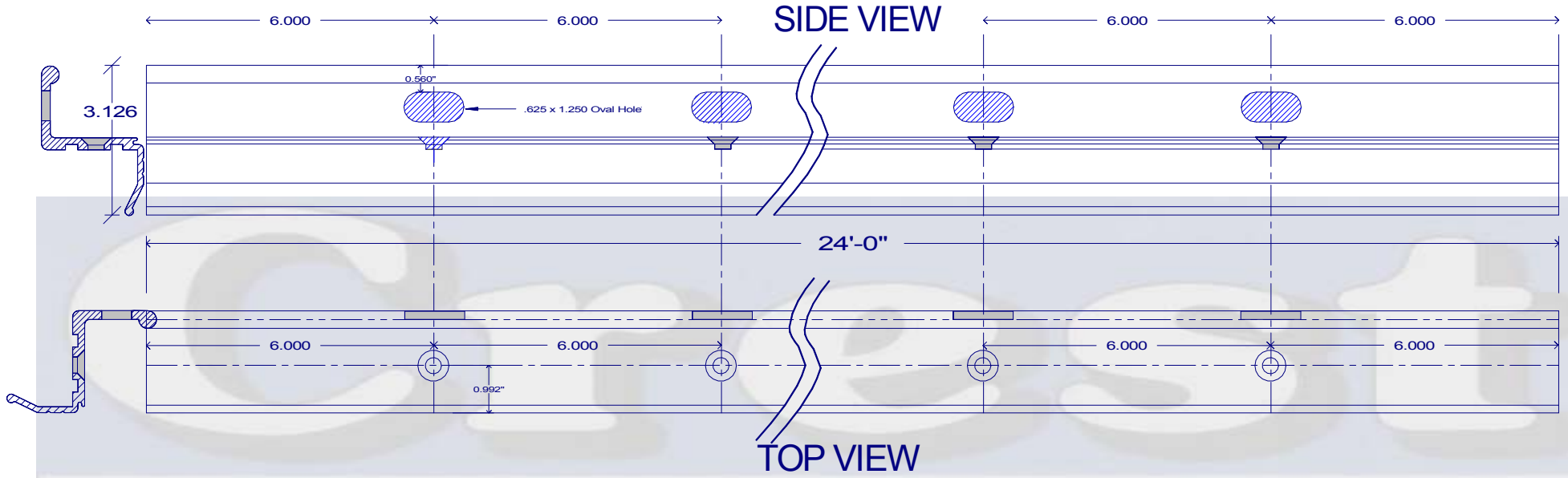


CREST 2819-CL 24
 "HUNTER MARINE STYLE"
 ALUMINUM TOE RAIL



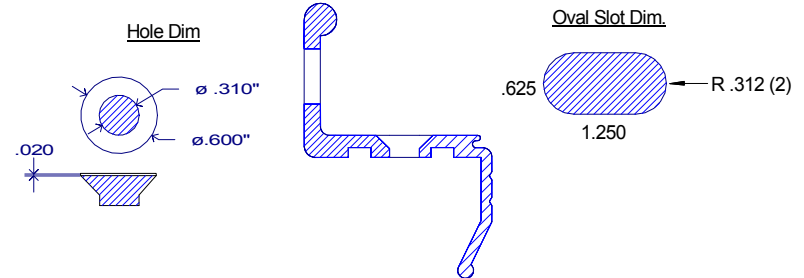
MARINE PRODUCTS
 www.crestaluminum.com

Crest Aluminum Products Inc
 Part No. 2819CL-31
 Die No. CTP- 51
 Hunter Slotted Toe Rail



- Notes:
- Alloy: 6061 T-6
 - Finish: Clear Anododize
 - Lengths: 24' - 0"
 - Slots: 6" On Center
 - Holes: 6" On Center
 - Wt./ Ft.: 1.132 lbs.

General Notes:
 Slots and Fastener Holes 6" On Center
 Chamfer & De-Burr All Oval Slots



PART NO	2819CL-24		Crest Aluminum Products Inc 9287 Tyler Blvd Mentor OH 44060 USA	REVISIONS	DATE
ALLOY	6061 T-6				
FINISH	60 MIN CLR VELO	JOB NO.	DATE	04-10-07	
LENGTHS	24'-0"	CUSTOMER / PROJECT "HUNTER MARINE" Style Toe Rail			
UNSPEC RADIUS	.016"	© Crest Aluminum Products Inc 2007 J.M. Allin			
DRAWING BY:	J. M. ALLIN				