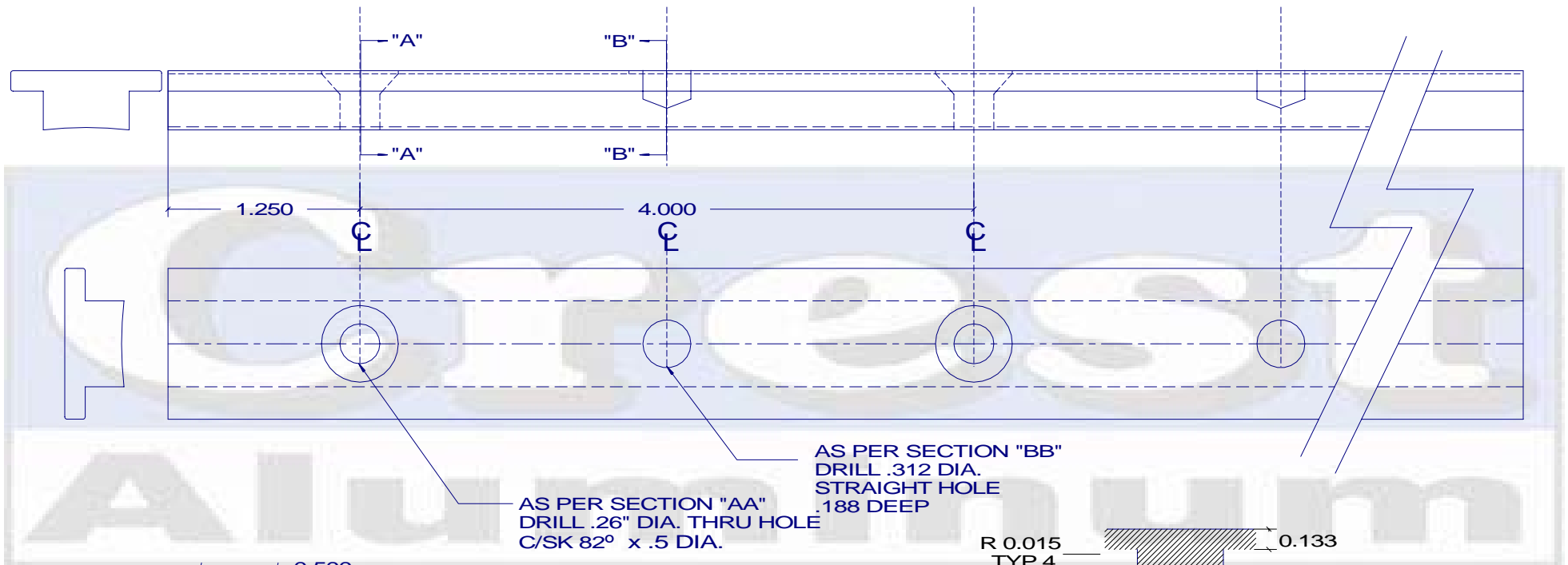


CREST #2815
1" ALUMINUM "T" TRACK



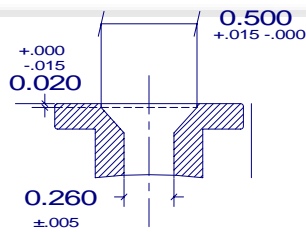
MARINE PRODUCTS

Crest Aluminum Products Inc
Part No. 2820-xx
Die No. CTP-XX
Hunter Legend Toe Rail

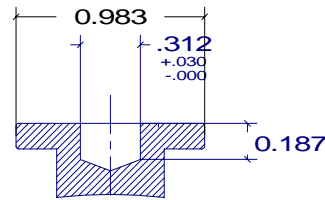


AS PER SECTION "AA"
DRILL .26" DIA. THRU HOLE
C/SK 82° x .5 DIA.

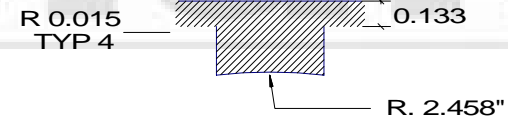
AS PER SECTION "BB"
DRILL .312 DIA.
STRAIGHT HOLE
.188 DEEP



SECTION "AA"



SECTION "BB"



ACTUAL SIZE



1/4" PHILLIPS
FLAT HEAD

Notes:

Alloy: 6061 T-6
Finish: Clear Anodize
Hardcoat Anodize
Lengths: 14'-2"
Holes: See Drawing
Wt./ Ft.:

PART NO.	C-2820-xx		Crest Aluminum Products Inc 8287 Tyler Blvd Mentor OH 44060 USA	REVISIONS	DATE
ALLOY	6061 T-6				
FINISH	60 MIN CLR VELO	JOB NO.	DATE:		
LENGTHS	31'-0"	CUSTOMER / PROJECT			
UNSPEC RADIUS		C-2815 1" T TRACK			
DRAWING BY:	J. M. ALLIN	© Crest Aluminum Products Inc 2008 J.M. Allin			